



Borough of Lititz, Pennsylvania

CONSTRUCTION SPECIFICATIONS FOR CURB AND SIDEWALK TABLE OF CONTENTS

- 1. Permits**
- 2. Line and Grade**
- 3. General Requirements**
- 4. Obstructions**
- 5. Expansion Joints**
- 6. Detectable Warning Surfaces**
- 7. Scoring**
- 8. Monuments**
- 9. Guarantee**
- 10. Materials and Mix**
- 11. Dimensions**
- 12. Foundation**
- 13. ADA Ramps**
- 14. Exhibit A**
 - a. Driveway curb standard detail**
 - b. Standard and rolled curb standard detail**

CONSTRUCTION SPECIFICATIONS FOR CURB AND SIDEWALK

1. PERMITS

- a. A curb and sidewalk permit must be obtained from the Borough prior to the start of work. The Contractor shall notify the Public Works Department 24 hours in advance of pouring for final inspection of forms and base prior to pouring concrete.

2. LINE AND GRADE

- a. Curbs and sidewalks shall be constructed in accordance with approved development and or Borough plans and specifications, and to lines and grades established by the Borough. Forms shall be straight and true to grade. Before starting work, the contractor shall stretch string lines to check the line and grade. Sidewalk and grass strip shall have a slope of $\frac{1}{4}$ " per foot to the top of the curb.

3. GENERAL REQUIREMENTS

- a. Clean up
 - i. The Contractor shall clean and remove from the project and adjacent property all surplus and discarded materials, equipment, and temporary structures and shall have the project in a presentable condition throughout and within forty-eight (48) hours after completion of the work. In addition, topsoil shall not be stockpiled on the street under any circumstances.
- b. Protection
 - i. Suitable barricades shall be placed around the work area in such a manner as to protect both pedestrian and vehicular traffic. Protection shall be in accordance with PA DOT Publication 213 and the PA DOT Highway Occupancy Permit when working within the State right-of-way.

4. OBSTRUCTIONS

- a. Where existing structures such as light standards, poles, fire hydrants, valve boxes, etc. within the limits of construction, prior to placing concrete a pre-molded expansion joint material $\frac{1}{4}$ " in thickness, shall be placed around the structure for the full depth of the concrete. The concrete shall be scored in a square 8" wider than the maximum dimension of the structure.

The distance from the top of the curb to the center of the nut on the steamer connection of fire hydrants shall be not less than 16". Where the grade will not permit this clearance, a circular depression shall be placed in the curb to provide necessary space.

5. EXPANSION JOINTS

- a. Where a sidewalk abuts the curb, building, wall or other permanent structure, a pre-molded expansion joint material ¼" in thickness, shall be placed between the structure and sidewalk for the full length of such permanent structure and full depth of the sidewalk. The sidewalk shall be constructed in 20' maximum lengths. A pre molded expansion material having a minimum thickness of ¼" shall separate slabs at curved sidewalks and at intervals of not more than 20'. The slabs between joints shall be divided into blocks not more than 5' in length by scoring transversely.
- b. Curbing shall be constructed in 10' lengths. A pre molded expansion material having minimum thickness of ¼" shall be placed between sections of radius curb and at intervals of not more than 40'. Intermediate joints between 10' sections shall be formed with a plate during construction or saw cut when the concrete is still curing.

6. DETECTABLE WARNING SURFACES

- a. The system must be cast in place for all new or replaced curb ramps, made of cast iron, polymer concrete or polymer composite materials. All existing curb ramps in good standing may have a surface applied system installed made of the same materials of cast in place. All systems must be comprised of truncated domes with spacing set for in PADOT RC67-M. The surface color of the truncated dome must be BRICK RED to allow for visual contrast.

7. SCORING

- a. Scoring shall be 1/5 the thickness of the concrete. The concrete shall be cut the full depth of the concrete before scoring is completed.

8. MONUMENTS

- a. No Monuments, mag nails or property corners shall be covered or disturbed by the construction of permanent sidewalk or curb. Whenever monuments are either above or below the finished grade of a sidewalk, the Borough shall be given sufficient notice to permit resetting the monument prior to pouring concrete.

9. GUARANTEE

- a. Concrete curbs and sidewalks shall be guaranteed by the contractor for a period of 3 years from the date of completion. If the concrete should fail within the guarantee period, the contractor shall replace all broken or disintegrated sections. Cracks in the curb or sidewalk that affect wither strength or alignment shall be considered adequate proof of improper

foundation and shall be cause for the contractor to remove the curb and or sidewalk and replace it.

10. MATERIALS AND MIX

- a. All materials shall be conformed to specifications for air entered concrete, as specified by the PA DOT Pub 408 latest edition with a maximum compressive strength of 4,000 pounds per square inch after 28 days.

11. DIMENSIONS

- a. Curbs
 - i. Curbs and sidewalks shall be constructed to the dimensions shown on approved subdivision or Borough plans or the Borough standard detail.
 - ii. No monolithic pouring.
- b. Concrete Sidewalk
 - i. Sidewalks shall have a minimum thickness of 4" where used solely for pedestrian traffic and a minimum of 6" at all driveways. Reinforcing wire mesh is required for all sidewalks at driveways. Reinforcement should be placed 2" from the bottom of the concrete.
 - ii. No monolithic pouring.
- c. Brick Sidewalks
 - i. Approval from the Lititz Borough must be obtained before starting any construction of a brick sidewalk. Sidewalks shall have a minimum of one layer of brick pavers. After the pavers are placed sand shall be brushed into the joints.
- d. Driveways
 - i. The rolled curb shall not be depressed below 3 inches above the street surface of the driveways. For driveways to public garages, gas stations and places of business, the length of this depressed curb shall not exceed thirty-five feet without a safety island. This safety island shall not be less than 15' in length. Pipes, grates, or other construction shall not be placed in the gutter to form a driveway ramp.
- e. Driveway Curb
 - i. Driveway curb shall be constructed to the dimensions shown on the Borough standard detail.
 - ii. Driveway curb can not be cut from existing standard curb.
 - iii. When replacing or installing driveway curb on a State right-of-way, the property owner or contractor must obtain Highway Occupancy Permit before beginning work.

12. FOUNDATION

- i. Curb
 - 1. Excavation shall be made to the required depth, and the material upon which the curb is to be constructed shall be thoroughly compacted for a firm, even surface. A 4" layer of new 2B stone shall be placed under the curb. Curbs

shall be 7” wide at the top, 8” wide at the bottom and 18” deep. Only the curb reveal should be slanted.

ii. Concrete Sidewalk

1. Excavation shall be made to the required depth and a new layer of 2B stone not less than 4” thick shall be placed and thoroughly compacted prior to laying the sidewalk. If the sidewalk is at a driveway, the new bedding shall be a minimum of 6” of 2B stone.

iii. Brick Sidewalk

1. Excavation shall be made to the required depth and a 6” layer of 2B stone shall be place and thoroughly compacted. Then a 2” layer of stone dust shall be placed and compacted prior to placing the brick.

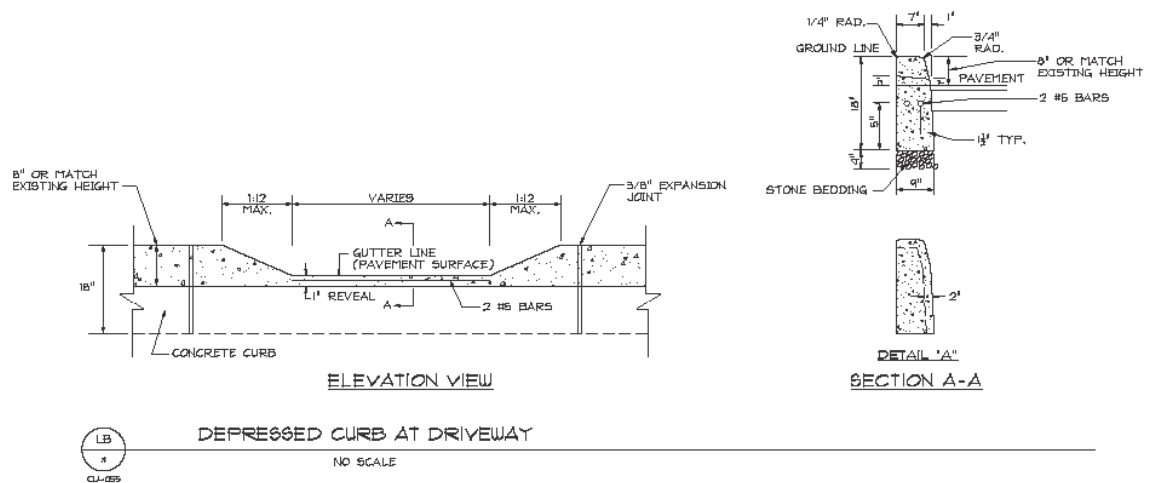
iv. Forms

1. Forms shall be of metal or wood, straight, free from warp and of sufficient strength to resist the pressure of the concrete without springing. If wood, they shall be commercial grade 2” planks, surfaced on the inside and the top. Forms shall be of a depth equal to the depth of the concrete. A front and back form shall be used for the curb. Forms shall be accurately set to line and grade in such a manner as to prevent settlement or displacement.

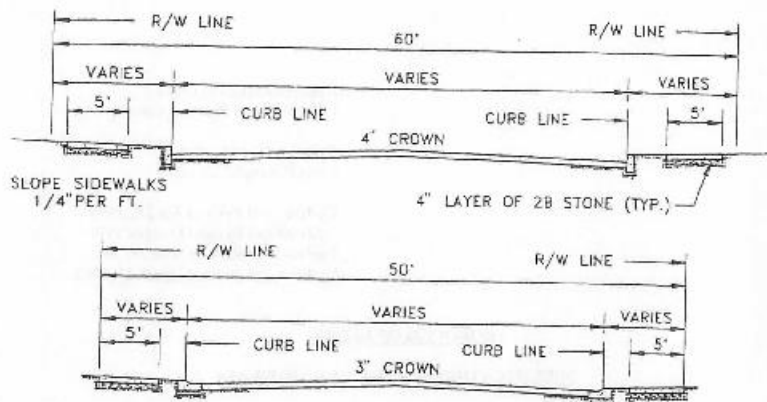
13. ADA RAMPS

- a. ADA ramps shall be constructed to dimensions in PADOT RC67-M.

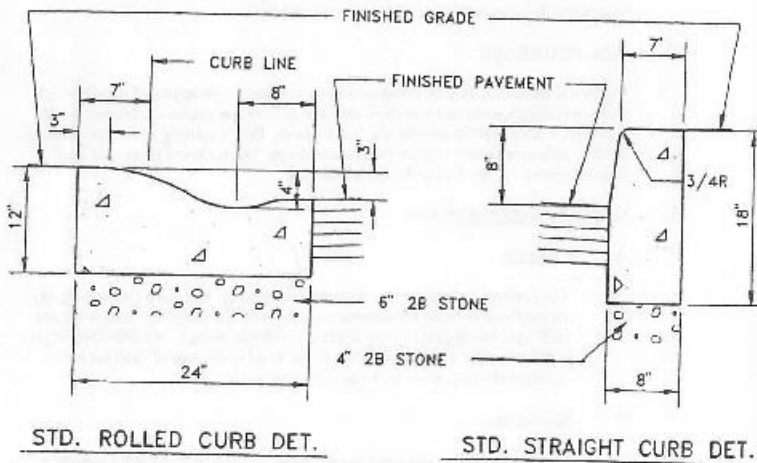
14. DRIVEWAY CURB STANDARD DETAIL



Approved June 16, 1964 by Lititz Borough Planning Commission
Approved July 8, 1964 by Lititz Borough Council
Updated and Revised April 6, 1976
Updated and Revised October 1979
Updated and Revised June 25, 1991
Updated and Revised March 27, 2008
Updated and Revised December 28, 2021



TYPICAL STREET CROSS-SECTIONS



LITITZ BOROUGH LANCASTER COUNTY, PA CURB AND STREET STANDARDS

APPROVED BY:
BOROUGH COUNCIL APRIL 29, 2008

Approved June 16, 1964 by Lititz Borough Planning Commission
Approved July 8, 1964 by Lititz Borough Council
Updated and Revised April 6, 1976
Updated and Revised October 1979
Updated and Revised June 25, 1991
Updated and Revised March 27, 2008
Updated and Revised December 28, 2021